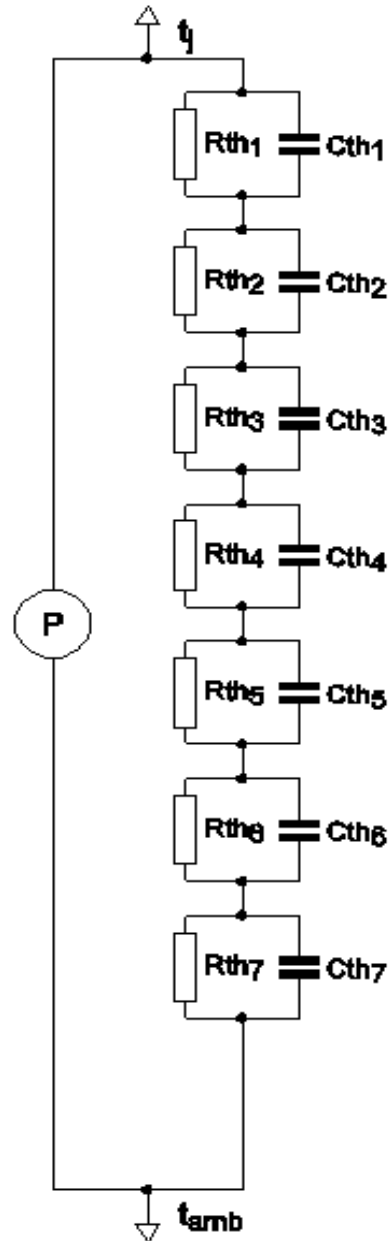


SPICE thermal model

PSMN2R0-30YLD

Symbol	Parameter	Conditions	Min	Typ	Max	Unit
$R_{th(j-mb)}$	thermal resistance from junction to mounting base		-	-	1.06	K/W

C_{th1}	4.731E-05 F
C_{th2}	2.675E-04 F
C_{th3}	3.391E-04 F
C_{th4}	2.046E-03 F
C_{th5}	4.359E-03 F
C_{th6}	1.268E-02 F
C_{th7}	1.587E-01 F
R_{th1}	1.876E-03 Ω
R_{th2}	4.464E-03 Ω
R_{th3}	2.674E-02 Ω
R_{th4}	5.175E-02 Ω
R_{th5}	2.284E-01 Ω
R_{th6}	6.730E-01 Ω
R_{th7}	7.378E-02 Ω



Part: PSMN2R0-30YLD
 Date: 17/11/2015
 Model Rth 1.06 K/W